

February 23, 2018

Dear John Rennie Families,

As you are aware, one of the bus companies, Transco Inc., which services JRHS has advised us that their drivers will be on strike Wednesday, February 28th. With many of our affected families making alternative plans for getting to school, we are once again expecting a higher than normal volume of traffic during drop-off and pick-up times.

With more cars on the street, it will take longer than usual to drop-off / pick-up your child(ren). Please allow for extra time, and please be patient and doubly alert during drop-off / pick-up. Additionally, in order to maintain a consistent flow of traffic in the mornings, please ensure that your child(ren) are prepared to immediately disembark your vehicle and proceed to school.

Please make note of JRHS's Drop-Off / Pick-Up Zone protocol when making travel arrangements. Also, please consult the attached outdoor map for additional drop-off / pick-up information.

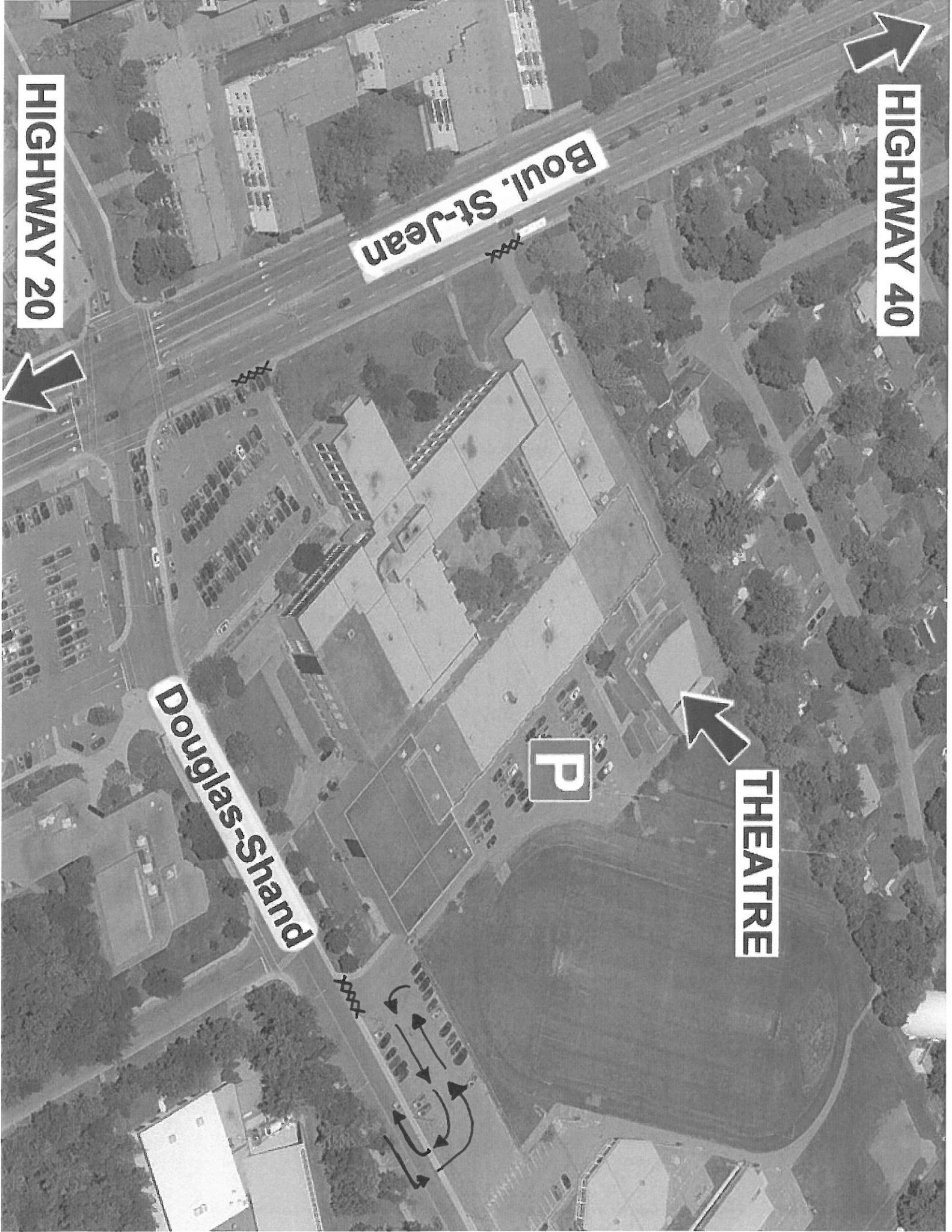
#### JRHS Drop-Off / Pick-Up Protocol

- Drop-off/Pick-Up Zone (zone with yellow blocks in center) is accessible via Douglas Shand from **8am-4pm**. Please follow in a single-file loop to allow traffic to flow smoothly in one direction.
- Back parking lot and alleyway is **closed** to parents between 8am and 4pm.
- St-Jean's entrance (front of school) is for staff and special needs transportation only (*with the exception of pick-ups/drop offs during the school day due to medical appts etc*).

Thank you for your cooperation.

Cristina Prata

Principal



Boul. St-Jean

HIGHWAY 40

HIGHWAY 20

Douglas-Shand

THEATRE

P

